



HURRICANE ELECTRIC  
INTERNET SERVICES

# Essential IPv6 for the Linux Systems Administrator

---

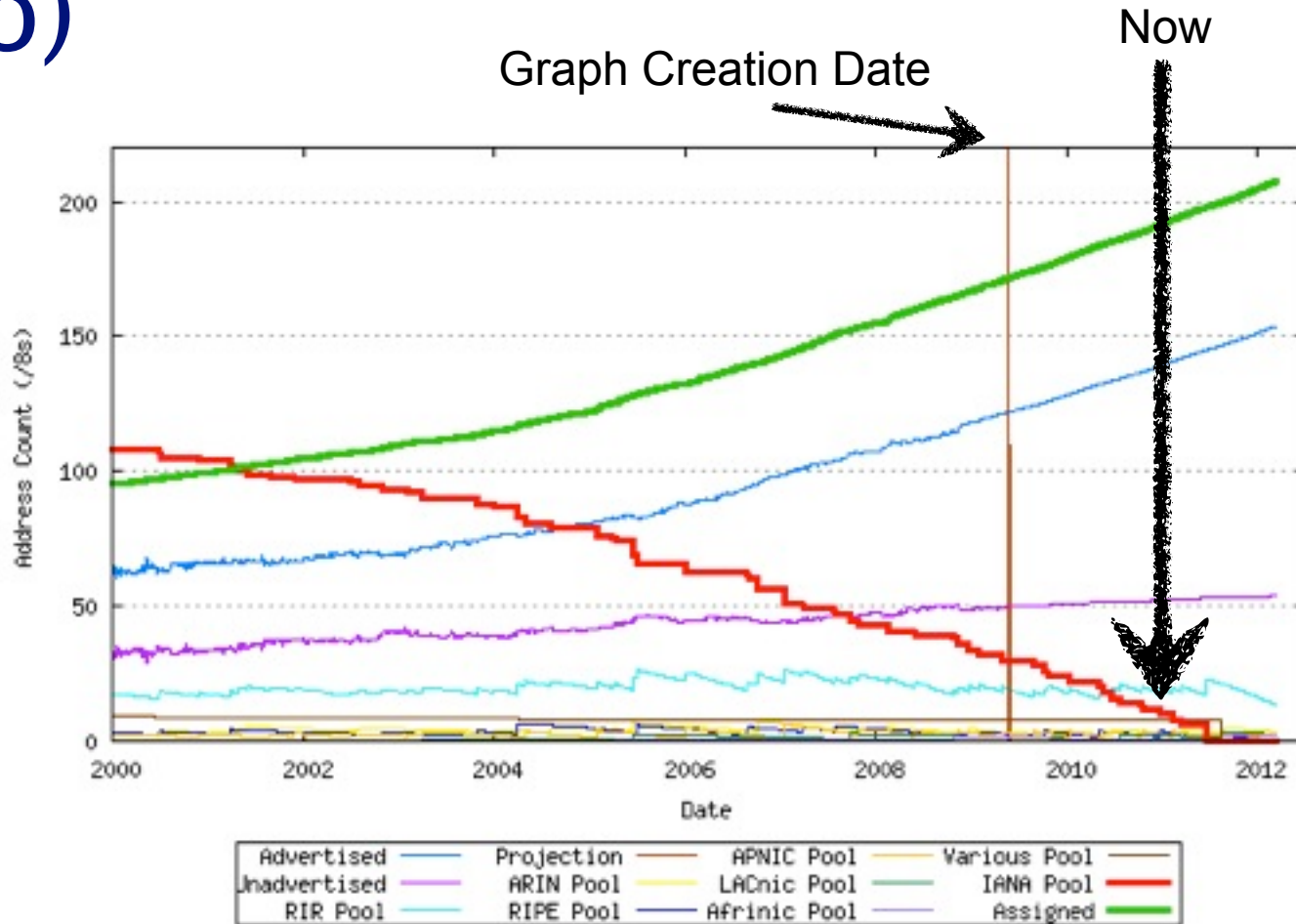
Owen DeLong  
[owend@he.net](mailto:owend@he.net)

Revised 1/31/2010

Hurricane Electric

Tuesday, March 8, 2011

# Why is this important? (A year ago)



# Why is this important? – Today

**IPv4 & IPv6 Statistics**

**RIR v4 /24s Left**

- AfrNIC 267,412
- APNIC 345,577
- ARIN 548,813
- LACNIC 263,729
- RIPE 332,163

**v6 ASNs**  
8% (3,206/36,955)

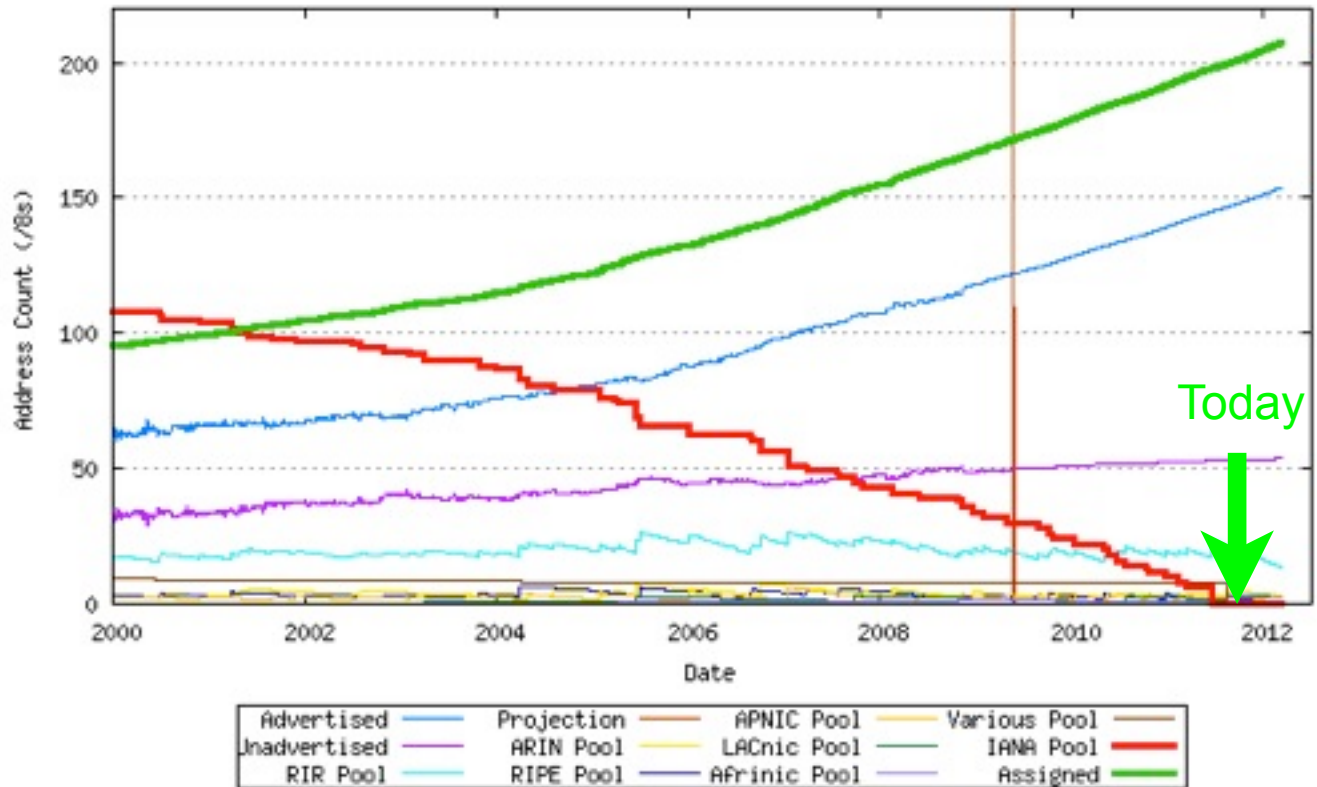
**v6 Ready TLDs**  
83% (256/306)

**v6 Glues**  
4,445

**v6 Domains**  
1,457,575

**0**  
days remaining  
**IANA exhausted**

HURRICANE ELECTRIC



# A review of the last 14 months in IPv4

IPv4 Address Space Consumption										January 2010					
0	1	2	3	4	5	6	7	8	9	10	11	12	13	14	15
16	17	18	19	20	21	22	23	24	25	26	27	28	29	30	31
32	33	34	35	36	37	38	39	40	41	42	43	44	45	46	47
48	49	50	51	52	53	54	55	56	57	58	59	60	61	62	63
64	65	66	67	68	69	70	71	72	73	74	75	76	77	78	79
80	81	82	83	84	85	86	87	88	89	90	91	92	93	94	95
96	97	98	99	100	101	102	103	104	105	106	107	108	109	110	111
112	113	114	115	116	117	118	119	120	121	122	123	124	125	126	127
128	129	130	131	132	133	134	135	136	137	138	139	140	141	142	143
144	145	146	147	148	149	150	151	152	153	154	155	156	157	158	159
160	161	162	163	164	165	166	167	168	169	170	171	172	173	174	175
176	177	178	179	180	181	182	183	184	185	186	187	188	189	190	191
192	193	194	195	196	197	198	199	200	201	202	203	204	205	206	207
208	209	210	211	212	213	214	215	216	217	218	219	220	221	222	223
224	225	226	227	228	229	230	231	232	233	234	235	236	237	238	239
240	241	242	243	244	245	246	247	248	249	250	251	252	253	254	255

Allocated to RIR

IANA Free Pool

Other Uses



# A review of the last 14 months in IPv4

Allocated to RIR in 2010

IPv4 Address Space Consumption										End of 2011					
0	1	2	3	4	5	6	7	8	9	10	11	12	13	14	15
16	17	18	19	20	21	22	23	24	25	26	27	28	29	30	31
32	33	34	35	36	37	38	39	40	41	42	43	44	45	46	47
48	49	50	51	52	53	54	55	56	57	58	59	60	61	62	63
64	65	66	67	68	69	70	71	72	73	74	75	76	77	78	79
80	81	82	83	84	85	86	87	88	89	90	91	92	93	94	95
96	97	98	99	100	101	102	103	104	105	106	107	108	109	110	111
112	113	114	115	116	117	118	119	120	121	122	123	124	125	126	127
128	129	130	131	132	133	134	135	136	137	138	139	140	141	142	143
144	145	146	147	148	149	150	151	152	153	154	155	156	157	158	159
160	161	162	163	164	165	166	167	168	169	170	171	172	173	174	175
176	177	178	179	180	181	182	183	184	185	186	187	188	189	190	191
192	193	194	195	196	197	198	199	200	201	202	203	204	205	206	207
208	209	210	211	212	213	214	215	216	217	218	219	220	221	222	223
224	225	226	227	228	229	230	231	232	233	234	235	236	237	238	239
240	241	242	243	244	245	246	247	248	249	250	251	252	253	254	255

Allocated to RIR

IANA Free Pool

Other Uses



# A review in IPv4

APNIC receives final  
normal IANA allocation  
31 January, 2011

# last 14 months

Allocated to RIR in 2010

IPv4 Address Space Consumption															End of 2011
0	1	2	3	4	5	6	7	8	9	10	11	12	13	14	15
16	17	18	19	20	21	22	23	24	25	26	27	28	29	30	31
32	33	34	35	36	37	38	39	40	41	42	43	44	45	46	47
48	49	50	51	52	53	54	55	56	57	58	59	60	61	62	63
64	65	66	67	68	69	70	71	72	73	74	75	76	77	78	79
80	81	82	83	84	85	86	87	88	89	90	91	92	93	94	95
96	97	98	99	100	101	102	103	104	105	106	107	108	109	110	111
112	113	114	115	116	117	118	119	120	121	122	123	124	125	126	127
128	129	130	131	132	133	134	135	136	137	138	139	140	141	142	143
144	145	146	147	148	149	150	151	152	153	154	155	156	157	158	159
160	161	162	163	164	165	166	167	168	169	170	171	172	173	174	175
176	177	178	179	180	181	182	183	184	185	186	187	188	189	190	191
192	193	194	195	196	197	198	199	200	201	202	203	204	205	206	207
208	209	210	211	212	213	214	215	216	217	218	219	220	221	222	223
224	225	226	227	228	229	230	231	232	233	234	235	236	237	238	239
240	241	242	243	244	245	246	247	248	249	250	251	252	253	254	255

Allocated to RIR

IANA Free Pool

Other Uses



# A review in IPv4

# last 14

APNIC receives final normal IANA allocation  
31 January, 2011

IANA Free Pool Ends  
3 February, 2011

Allocated to RIR in 2010

IPv4 Address Space Consumption															February 3, 2011	
0	1	2	3	4	5	6	7	8	9	10	11	12	13	14	15	
16	17	18	19	20	21	22	23	24	25	26	27	28	29	30	31	
32	33	34	35	36	37	38	39	40	41	42	43	44	45	46	47	
48	49	50	51	52	53	54	55	56	57	58	59	60	61	62	63	
64	65	66	67	68	69	70	71	72	73	74	75	76	77	78	79	
80	81	82	83	84	85	86	87	88	89	90	91	92	93	94	95	
96	97	98	99	100	101	102	103	104	105	106	107	108	109	110	111	
112	113	114	115	116	117	118	119	120	121	122	123	124	125	126	127	
128	129	130	131	132	133	134	135	136	137	138	139	140	141	142	143	
144	145	146	147	148	149	150	151	152	153	154	155	156	157	158	159	
160	161	162	163	164	165	166	167	168	169	170	171	172	173	174	175	
176	177	178	179	180	181	182	183	184	185	186	187	188	189	190	191	
192	193	194	195	196	197	198	199	200	201	202	203	204	205	206	207	
208	209	210	211	212	213	214	215	216	217	218	219	220	221	222	223	
224	225	226	227	228	229	230	231	232	233	234	235	236	237	238	239	
240	241	242	243	244	245	246	247	248	249	250	251	252	253	254	255	
Allocated to RIR					IANA Free Pool					Other Uses						



# IPv4 Runout Process

- IANA runs out first, ~~~2011~~ February 3, 2011
- RIRs start running out probably ~~in 2012~~ around June, 2011
- End-User providers start running out shortly after RIR runout. Most likely, the larger ones first.
- After ISPs start running out, an increasing number of your customers/users will have limited or seriously degraded ability to connect via IPv4, possibly even no ability.





# IPv6 Transition -- How ready are we?

## ■ Things that are ready

- Backbones
- CMTS Systems (DOCSIS 3)
- MacOS (10.4+)
- Linux (2.6 Kernels)
- Windows (7, 2008, XP (limited))

- WiMax  
(specification, head end equipment)
- LTE (some)
- CPE (very limited)
- Early Adopters and some industry experts
- Hurricane Electric
- Me



# IPv6 Transition -- How ready are we?

## ■ Things that are NOT ready

- 📌 PON Systems

- 📌 DSL Systems

- 📌 CMTS Systems (DOCSIS 2)

- 📌 WDS/EVDO/HSPA

- 📌 WIMAX (handsets, providers)

- 📌 Older Windows (XP and earlier)

- 📌 Embedded systems

- 📌 Printers

- 📌 Home entertainment devices

- 📌 CPE (most)

- 📌 Most IT staff and management

---

# Quick survey



---

# Quick survey

How many of you have started planning IPv6 in your organization?



# Quick survey

How many of you have started planning IPv6 in your organization?

How many of you have IPv6 running in a test environment?



# Quick survey

How many of you have started planning IPv6 in your organization?

How many of you have IPv6 running in a test environment?

How many of you have started deploying IPv6 to your organization?



# Quick survey

How many of you have started planning IPv6 in your organization?

How many of you have IPv6 running in a test environment?

How many of you have started deploying IPv6 to your organization?

How many of you have a fully production dual-stack environment running in your organization?



# The real questions...

How many of you think your organization will be fully IPv6 ready by June, 2011?

What do you plan to do to fix that?

How do you plan to cope with a world where there are no more IPv4 addresses available?

How do you plan to cope with a world where some of your customers have only IPv6 connectivity, or, severely degraded IPv4 connectivity?





# The final question...

# Which Approach will you take?

IPv4/IPv6 Dual Stack Now



My dual stack network is running great!

IPv4 is just fine.  
We just need MOAR NAT!!



---

LoL Kitteh sez:



More IPv4 NAT

Are you fscking kidding me?

# What we'll cover

- Basics of IPv6
- IPv6 Addressing Methods
  - SLAAC
  - DHCP
  - Static
  - Privacy
- Linux Configuration for Native Dual Stack
- IPv6 without a native backbone available
- Free IPv6?



# Some additional topics

- Routing
- Firewalls
- DNS
- Reverse DNS
- Troubleshooting
- Staff Training



# Basics: IPv4 vs. IPv6

Property	IPv4 Address	IPv6 Address
Bits	32	128
Total address space	3,758,096,384 unicast 268,435,456 multicast 268,435,456 Experimental/other (Class E, F, G)	42+ Undecillion assignable <sup>1</sup> 297+ Undecillion IANA reserved <sup>2</sup>
Most prevalent network size	/24 (254 usable hosts)	/64 (18,446,744,073,709,551,616 host addresses)
Notation	Dotted Decimal Octets (192.0.2.239)	Hexidecimal Quads (2001:db8:1234:9fef::1)
Shortening	Suppress leading zeroes per octet	Suppress leading zeroes per quad, longest group of zeroes replaced with ::
<sup>1</sup> 42,535,295,865,117,307,932,921,825,928,971,026,432 assignable unicast (1/8th of total) <sup>2</sup> 297,747,071,055,821,155,530,452,781,502,797,185,024 IANA reserved (7/8th of total)		



# Relative Address Space (Perspective)



IPv4  
/24

Each circle  
is 284 pixels



All  
IPv4

An IPv6 /64

Would fill a little more than 1,532,464  
screens at 1024x768 pixels

A shape to represent the relative number  
of IPv6 /64 networks would require more  
than 1,532,464 million screens at 1024x768 pixels

The IPv6 Address space is not infinite, but, considering that there are more than 4 billion IPv6 network numbers for every possible IPv4 address, it is nearly so for all practical purposes.

Just in case, however, all current IPv6 is being issued from 1/8th of the total address space. If we need to allocate or assign more conservatively or develop a different assignment strategy, that can be deployed to some fraction of the remaining address space.



# Network Size and Number of networks (The tasty version)



One IPv4 /24 -- 254 M&Ms

One IPv6 /64 -- Enough M&Ms to fill all 5 of the great lakes.



Full Address Space, One M&M per /24 covers 70% of a football field



Full Address Space, One M&M per /64 fills all 5 great lakes.

Comparison based on Almond M&Ms, not plain. Caution! Do not attempt to eat a /64 worth of any style of M&Ms.

# Basics: IPv4 vs. IPv6 thinking

Thought	IPv4 dogma	IPv6 dogma
Assignment Unit	Address (/32)	Network (/64)
Address Optimization	Tradeoff -- Aggregation, Scarcity	Aggregation (At least for this first 1/8th of the address space)
Address Issue Methodology	Sequential, Slow Start, frequent fragmentation	Bisection (minimize fragmentation), issue large, minimal requests for more, aggregate expansions.
NAT	Necessary for address conservation	Not supported, Not needed -- Breaks more than it solves (other than possible NAT64)
Address Configuration	Static, DHCP	Stateless Autoconf, Static, some DHCP (needs work), DHCP-PD (NEW!!)





# Example: v6 only clients with v4 only servers



Internet



Internet on IPv4



Any quesitons?



# Basics Address Scopes

- Link Local -- fe80::- Site Local (deprecated) -- Only valid within site, use ULA or global as substitute.
- Unique Local Addresses (ULA) -- Essentially replaces IPv4 RFC-1918, but, more theoretical uniqueness.
- Global -- Pretty much any other address, currently issued from 2000::/3, globally unique and valid in global routing tables.



# Basics: Stateless Autoconfiguration

- Easiest configuration
- No host configuration required
- Provides only Prefix and Router information, no services addresses (DNS, NTP, etc.)
- Assumes that all advertising routers are created equal, rogue RA can be pretty transparent to user (RA guard required on switches to avoid)



# Stateless Autoconfiguration Process

- Host uses MAC address to produce Link Local Address. If MAC is EUI-48, convert to EUI-64 per IEEE process: invert 0x02 bit of first octet, insert 0xFFFE between first 24 bits and last 24 bits fe80::- IPv6 shutdown on interface if duplicate detected.
- ICMP6 Router Solicitation sent to All Routers Multicast Group



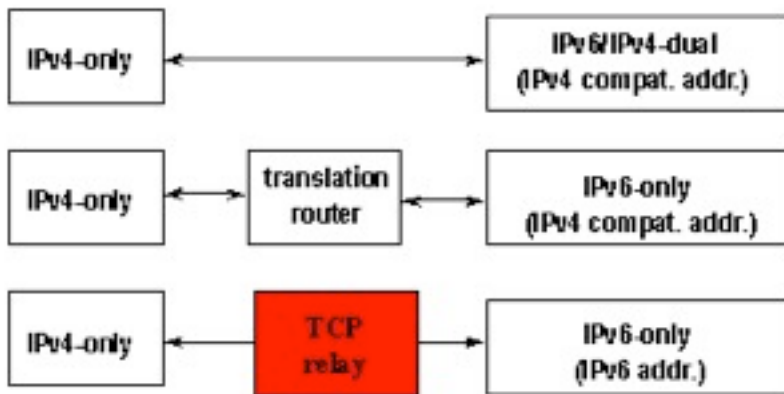
# Stateless Autoconfiguration Process (cont.)

- Routers send ICMP6 Router Advertisement to link local unicast in response. Also sent to All Hosts Multicast group at regular intervals.
- Router Advertisement includes Prefix(es), Preference, Desired Lifetime, Valid Lifetime.
- Host resets applicable Lifetime counters each time valid RA received.
- Address no longer used for new connections after Desired lifetime expires.
- Address removed from interface at end of Valid lifetime.
- Prefix(es)+EUI-64 = Host EUI-64 Global Address, netmask always /64 for SLAAC.



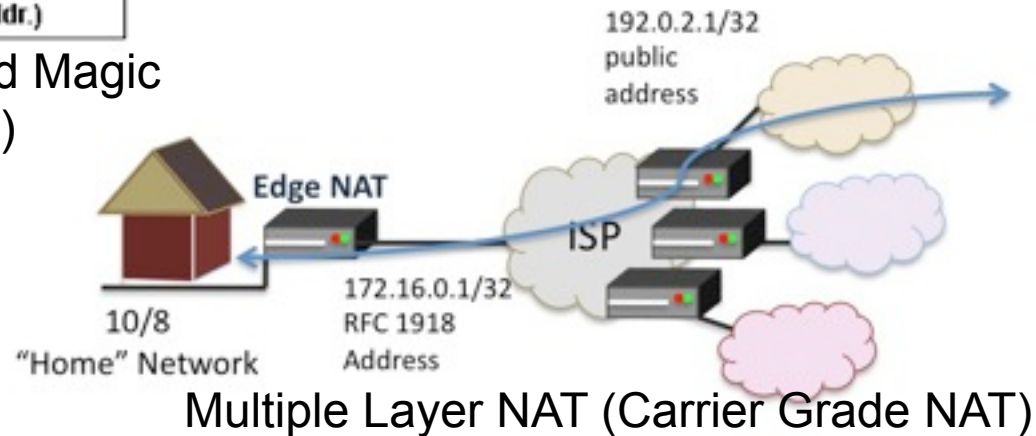
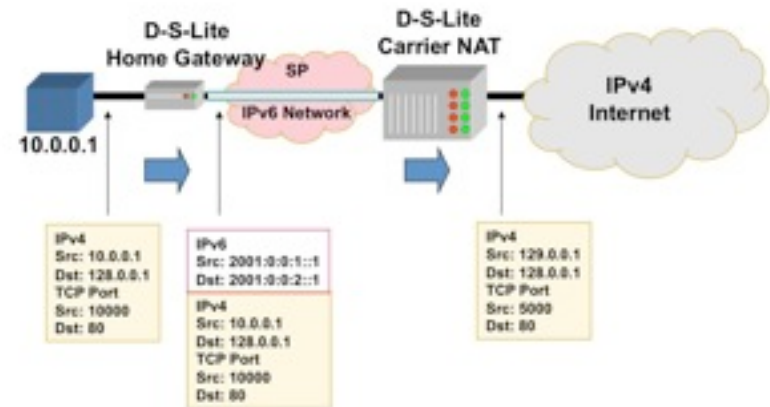
# If you think IPv6 is hard, wait until you try any of these.

Communication between IPv4 nodes and IPv6 nodes



As yet undefined/unimplemented Magic (TCP relay could be SSH tunnel)

## Dual Stack Lite (ISC)



# DHCPv6

- Can assign prefixes other than /64 --  
Theoretically to routers which then delegate various networks automatically downstream, a few limited implementations of this feature.
- Can assign addresses to hosts, cannot provide default router information.
- Can provide additional information about servers (DNS, Bootfile, NTP, etc.)
- Not much vendor support (yet)





# Static Addressing

- IPv6 can be assigned statically, same as IPv4
- Common to use one of two techniques for IPv4 overlay networks:
  - Prefix::`<addr>` (first 12 bits of 64 bit `<addr>` must be 0)
  - Either `<addr>` is IPv4 last octet(s) expressed as BCD, or `<addr>` is IPv4 last octet(s) converted to hex.
  - e.g. 192.0.2.154/24 -> 2001:db8:cafe:beef::154/64 (BCD) or 2001:db8:cafe:beef::9a/64 (Hex)
  - These mappings won't conflict with autoconfigured addresses since autoconfigured addresses will never be 000x:xxxx:xxxx:xxxx.



# Privacy Addresses

- Essentially a special form of Stateless Address Autoconfiguration which uses a new suffix for each flow and obfuscates the MAC address.
- RFC-3041
- Uses MD5 Hash with random component to generate temporary address
- Preferred and Valid lifetimes derived from SLAAC address



# Multiple addresses per interface

- IPv4 has some support for this in most implementations.
- IPv6 has full support for this in all implementations.
- IPv4, multiple addresses/interface are exception.
- IPv6, single address on an interface nearly impossible in useful implementation (link local required, global optional)



# IPSEC

- In IPv4, IPSEC is add-on software.
- In IPv6, IPSEC is a required part of any IPv6 implementation
- IPv6 does NOT require IPSEC utilization
- IPSEC is considerably easier to configure in IPv6.
- IPSEC automation may be possible in future IPv6 implementations.



# Configuring IPv6 Native on Linux

- Interface Configuration depends on your distro.
- Debian based distros (Debian, Ubuntu, etc.) use `/etc/interfaces`
- Red Hat based distros (RHEL, Fedora, CentOS) use `/etc/sysconfig/network-scripts/ifcfg-<int>`



# /etc/interfaces

```
iface eth0 inet static
    address 192.0.2.127
    netmask 255.255.255.0
    gateway 192.0.2.1
```

IPv4 (Static)

```
iface eth0 inet6 static
    address 2001:db8:c0:0002::7f
    netmask 64
    gateway 2001:db8:c0:0002::1
```

IPv6 (Static)

```
iface eth1 inet6 auto
```

IPv6 (Autoconf)



# /etc/sysconfig/network-scripts/ ifcfg-`<int>`

DEVICE=eth0

ONBOOT=yes

IPADDR=192.159.10.2

NETMASK=255.255.255.0

GATEWAY=192.159.10.254

IPv4 (Static)

IPV6INIT=yes

IPV6ADDR=2620:0:930::0200:1/64

IPV6\_DEFAULTGW=2620:0:930::dead:beef

IPV6\_AUTOCONF=no

IPV6ADDR\_SECONDARIES="\

2001:470:1f00:3142::0200:1/64 \

2001:470:1f00:3142::0200:2/64"

IPv6 (Static)

IPV6INIT=yes

IPV6\_AUTOCONF=yes

IPv6 (Autoconf)



# IPv6 without a native connection

- Three options (In order of preference)
  - 6in4 -- Tunnel your IPv6 in an IPv4 GRE Tunnel
  - 6to4 -- Tunnel your IPv6 in an auto-tunnel using an any-casted IPv6 mapping service
  - Teredo -- Tunnel your IPv6 in an auto-tunnel using a multi-server auto-configured process defined by Microsoft.





# Why 6in4

- GRE is well understood by most networkers
- Simple and deterministic
- No anycast magic -- Simplifies debugging
- Controlled by two endpoint administrators -- Greatly simplifies debugging
- Disadvantage: Manual config, but, not hard.



# Why 6to4

- Automatic configuration
- When it works, it's pretty clean and relatively self-optimizing.
- May be good option for mobile devices (laptop, cellphone, etc.)
- Hard to troubleshoot when it doesn't work.
- Disadvantage: Anycast == Non-deterministic debugging process.



# Why Teredo?

- Autoconfiguration
- May bypass more firewalls than 6to4
- Enabled by default in Windows (whether you want it or not)
- Meredo available for Linux (client and server)
- Disadvantage: Complicated and tricky to debug if problems occur.



# Configuring a 6in4 tunnel on Linux

- Not as straightforward as you would hope.
- Help available at <http://tunnelbroker.net>
- Example (route2, most 2.6+ kernels):

```
modprobe ipv6
ip tunnel add he-ipv6 mode sit remote 64.71.128.82 local 192.159.10.254
ttl 255
ip link set he-ipv6 up
ip addr add 2001:470:1F02:BE2::2/64 dev he-ipv6
ip route add ::/0 dev he-ipv6
ip -f inet6 addr
```

- Doesn't seem to be supported in Debian configuration files at this time.



# Configuring 6in4 continued

- Example Net Tools (most 2.4 kernels, some 2.6)

```
ifconfig sit0 up
ifconfig sit0 inet6 tunnel ::64.71.128.82
ifconfig sit1 up
ifconfig sit1 inet6 add 2001:470:1F02:BE2::2/64
route -A inet6 add ::/0 dev sit1
```

- Also not supported in configuration files



# Fedora 12 Configuration Files

## ■ Example:

### □ /etc/sysconfig/network-scripts/ifcfg-sit1

```
DEVICE=sit1
BOOTPROTO=none
ONBOOT=yes
IPV6INIT=yes
IPV6TUNNELIPV4=64.71.128.82
IPV6TUNNELIPV4LOCAL=192.159.10.2
IPV6ADDR=2001:470:1f02:BE2::2/64
```

### □ /etc/sysconfig/network

```
NETWORKING=yes
NETWORKING_IPV6=yes
HOSTNAME=myhost.example.com
IPV6_ROUTER=yes
IPV6FORWARDING=yes
```



# Fedora 12 Configuration Files

- Example:

- `/etc/sysconfig/static-routes-ipv6`

```
sit1      ::/0
```

- `/etc/sysconfig/network-scripts/route6-sit1`

```
2001:470:1f00:3142::/64
```



# IPv6 For Free? YES!!

- Several tunnel brokers offer free IPv6.
  - My favorite is the HE Tunnelbroker at [www.tunnelbroker.net](http://www.tunnelbroker.net)
- If you or your organization has a presence at an exchange point with Hurricane Electric, we currently offer free IPv6 Transit.





# Routing

- Usual suspects
  - OSPF (OSPFv3)
  - BGP (BGP4 Address Family inet6)
  - RA and RADVD
  - Support in Quagga and others



# Firewalls

- ip6tables much like iptables
  - Excerpt from my ip6tables configuration

```
-A RH-Firewall-1-INPUT -d 2620:0:930::200:2/128 -m state --state NEW -m tcp -p tcp
--dport 3784 -j ACCEPT
-A RH-Firewall-1-INPUT -d 2620:0:930::200:1/128 -m state --state NEW -m udp -p udp
--dport 53 -j ACCEPT
-A RH-Firewall-1-INPUT -d 2001:470:1f00:3142::200:1/128 -m state --state NEW -m udp
-p udp --dport 53 -j ACCEPT
-A RH-Firewall-1-INPUT -d 2620:0:930::200:2/128 -m state --state NEW -m udp
-p udp --dport 53 -j ACCEPT
```





# DNS -- BIND Configuration

- Current BIND versions ship with IPv6 template zones (hints, rfc1912, etc.)
- IPv6 addresses valid in ACLs just like IPv4, same rules
- Zone configuration identical except reverse zones for IPv6 ranges called "ip6.arpa":

```
zone "0.3.9.0.0.0.0.0.2.6.2.ip6.arpa" IN {  
    type master;  
    file "named.2620:0:930::-48.rev";  
};
```







# DNS -- Common Reverse DNS mistakes

- Not enough zeroes -- 2620:0:930::200:2 is much easier to type, but, remember for reverse DNS you have to expand all those suppressed zeroes before you reverse the address.
- Missing dots (.) -- Every nibble gets one.
  - 2.0.0.0.0.0.2.0.0.0.0.0.0.00.0.0.3.9.0.0.0.0.0.0.2.6.2
  - Do you see the error in the previous line?
- Reversing first then expanding
  - 0.0.0.2.0.2.0.0.0.0.0.0.0.0.0.0.0.0.3.9.0.0.0.0.0.2.6.2.0



# Troubleshooting

- Mostly like troubleshooting IPv4
- Mostly the same kinds of things go wrong
- Just like IPv4, start at L1 and work up the stack until it all works.
- If you are using IPv4 and IPv6 together, may be easier (due to familiarity) to troubleshoot L1-2 on IPv4.





# Troubleshooting

- Common problems
  - ❑ Cannot ping remote IPv6 address on Tunnel
  - ❑ Cannot ping remote IPv6 address on ethernet
  - ❑ Cannot ping MY IPv6 address (tunnel or ethernet)
  - ❑ Cannot reach IPv6 Internet
    - Long waits for IPv6 enabled websites
    - Long delays in host resolution
  - ❑ Why don't my IPv6 neighbors show up in ARP?



# A wee bit about Neighbor Discovery and other tools

- No broadcasts, no ARP
- This is one of the key differences with IPv6.
- Instead an all hosts multicast address is used.
- IPv4: `arp 192.0.2.123`
- IPv6: `ip -f inet6 neigh show 2620:0:930::200:2`
- `ping` -> `ping6`
- `traceroute` -> `traceroute6`
- `telnet`, `ssh`, `wget`, etc. just work



# Cool SSH trick

- Special for those that made it through the whole presentation:
- If you have a dual stack host you can SSH to in between an IPv4 only and an IPv6 only host that need to talk TCP, then, you can do this from the client:
- `ssh user@dshost -L <lport>:server:<dport>`
- Then, from the client, connect to `localhost:lport` and the SSH tunnel will actually protocol translate the session.



# SSH trick example

- myhost -- IPv6-only host 2620:0:930::200:f9
- dshost -- IPv4/v6 dual stack host: 192.159.10.2 and 2620:0:930::200:2
- desthost -- IPv4-only host 192.159.10.100
- On myhost I type:
  - `ssh owen@2620:0:930::200:2 -L 8000:192.159.10.100:80`
  - Then, I can browse to `http://[::1]:8000`
- My browser will connect to the ssh tunnel via IPv6, and, the SSH daemon at dshost will pass the contents along via IPv4.



# Staff Training

- Hopefully this presentation works towards that.
- You'll need more.
- Plan for it.
- Budget for it.
- Allocate time for it.
- If possible, have the staff being trained leave their pagers/blackberries/iPhones/etc. in the car during training.





---

## Contact:

Owen DeLong  
IPv6 Evangelist  
Hurricane Electric  
760 Mission Court  
Fremont, CA 94539, USA  
<http://he.net/>

owend at he dot net  
+1 (408) 890 7992

